

Manual Wireless Start



2019v1

SPORT TIMING SYSTEMS



TimeTronics BVBA
Lammerdries-Oost 23B
B-2250 Olen, Belgium

www.timetronics.be - info@timetronics.be

Table of contents

- 1. Wireless Start in MacFinish 2D 100 4**
 - 1.1 Connection 4
 - 1.2 How should I know 4
 - 1.3 MacFinish software 5
 - Status of MacFinish Unit.....5
 - Select another Starters Unit5
 - Select a serial port, when you lost the standard data cable.....6
 - Register as main or backup photofinish.....7
 - Start detection (dis)connected7
 - Start signals.....7
- 2. Wireless Start in MacFinish 2D 400 8**
 - 2.1 Connection 8
 - 2.2 MacFinish software 8
 - The firmware.....8
 - MacFinish software.....9
 - Status of MacFinish Unit.....9
 - Select another Starters Unit9
 - Change the name of a Starters Unit.....10
 - Register as main or backup photofinish.....10



Manual Wireless Start

Welcome to the "Wireless Start" user manual.

May we recommend you to gently browse through the entire manual first, just to have an initial idea of how the book is structured. As we can't possibly explain all details simultaneously, this might help you a bit in understanding and tracing things back. Of course, the table of contents will also help you in doing so.

Please note that all pictures are examples, the delivered version can be different than shown in this manual please inform yourself before purchase.

If you, after reading this document, have any further question regarding the operation or service of this or any other TimeTronics equipment, please contact your local distributor or TimeTronics directly, by email: info@timetronics.be, or call us at +32 (0) 14 23 19 11.

Please also contact us if you have any remarks or advice regarding this user manual: info@timetronics.be

Good luck with Wireless Start and thank you for your confidence in the TimeTronics products and services.

The editors

© Copyright 2019 TimeTronics. All rights reserved.

TimeTronics BVBA
Lammerdries-Oost 23b
B-2250 Olen
Belgium

Tel.: +32 (0) 14 23 19 11

Disclaimer

Under no circumstances shall TimeTronics be liable for any loss, damage or expense suffered or incurred with respect to any defective product. In no event shall TimeTronics be liable for any incidental or consequential damages that you may suffer directly or indirectly from use of any product.

1. Wireless Start in MacFinish 2D 100

Wireless Start is compatible with version 8.0.0.60 of the MacFinish 2D 100 software or later. You can find our software on our website: www.timetronics.be/software.html.

1.1 Connection

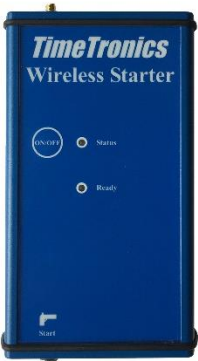
Connect the power cable from the MacFinish Unit to the second start input in the MacFinish interface box (back side).




Connect the USB cable from the MacFinish Unit to the computer running MacFinish 8.x. This connection can even be made or broken during runtime. MacFinish has an embedded USB device watcher that triggers loading or releasing of the plugin.

1.2 How should I know

- 2 Wireless Starters should not be powered up within 6 seconds of each other. This could lead to a potential (Unique ID number) conflict or a wireless channel that is double used.

Wireless Starter			
	Led 1: "Status"	Green	No receivers associated
		Green blinking	At least 1 receiver associated
		Orange blinking	Receiver associated but no communication
		Red blinking	Battery almost flat
	Led 2: "Ready"	MacFinish Ready led	

Wireless Receiver			
	Led: "Status"	Green	Not associated to Starter
		Green blinking (fast)	Associated but not synced to Starter
		Green blinking (slow)	Associated and synced to Starter

- At first use, only power up 1 Wireless Receiver and 1 Wireless Starter. Wait until connection is established and then change the name of the Starter to a familiar name (e.g. Ike). If a 2nd Wireless Starter is used, power up the 2nd device and make a connection to it. Now change the name of the 2nd device to a different familiar name (e.g. Tina). This makes it more clear to who the Wireless Receiver is connected with. By default, all names are Starter 1.
- The Wireless Receiver's led start blinking fast (green color) once it has made connection to a Wireless Starter. It takes approximately 50 seconds for the Receiver to synchronize with the Starter and the led will start blinking slowly. Be patient.

1.3 MacFinish software

Status of MacFinish Unit

You notice one extra segment in the statusbar indicating the status of the MacFinish Unit.



Depending on the color of the symbol, this is the status of the MacFinish Unit. If you have given the Starters Unit a name, the symbol will be replaced with the name.

- ✓✓ (transparent) No plugin is loaded (check the dll) or no camera is connected
- ✓✓ (#000000) No data communication with MacFinish Unit (check the USB connection)
- ✓✓ (#ff0000) No connection from MacFinish Unit to any Starters Unit
- ✓✓ (#ff5500) Connection from MacFinish Unit to Starters Unit established, but they are not yet in-sync
- ✓✓ (#ffa000) MacFinish Unit and Starters Unit are connected and in-sync, but there has been no communication for some seconds.
- ✓✓ (#177245) MacFinish Unit and Starters Unit are connected and in-sync, no problems detected

Select another Starters Unit

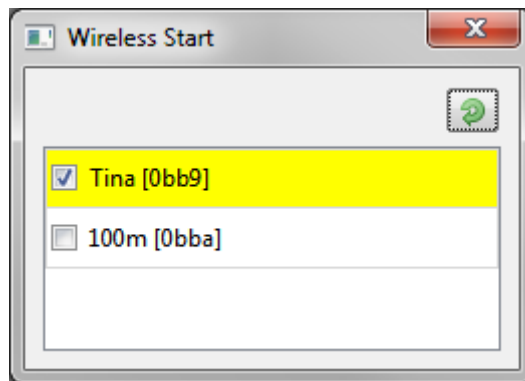
If you double-click the symbol, you will see a window where you can select another Starters Unit or you can scan for all available Starters Units.

The refresh-button at the top initiates a new scan for available Starters Units.

In the list, you will see the names of each Starters Unit with its Unique ID number between brackets. If the Starters Unit has no name or the name is not yet known, only the Unique ID number is shown. You can only know the name if you associated with that Unique ID number. Names and Unique ID numbers are remembered for as long as the live time of the plugin. In theory, it is possible that a Unique ID number used to be another Starters Unit and you will still see the name of the other Starters Unit. Once you associate to the Starters Unit, its name is updated.

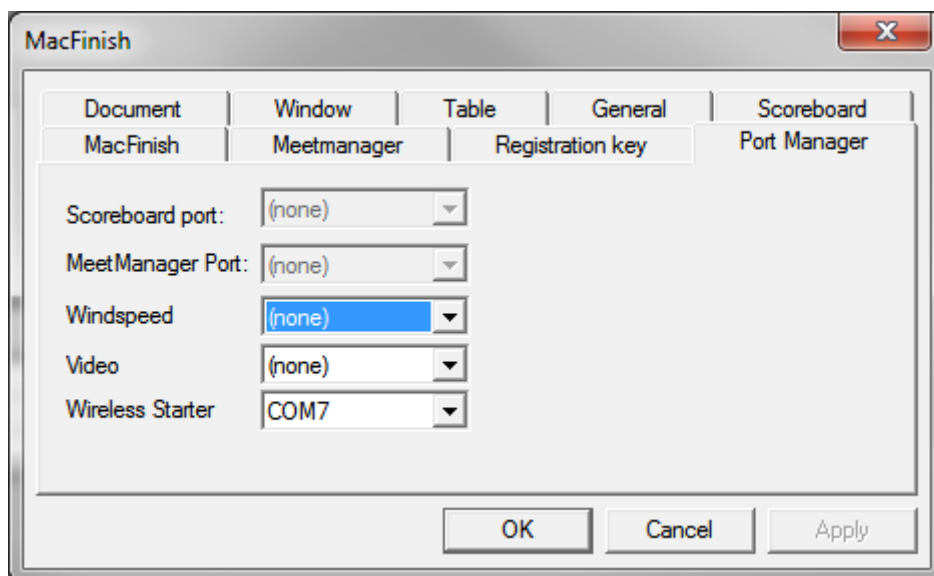
If you select another Starters Unit, the association process is started immediately.

If you like to change the name of a Starters Unit, associate to it and type over the current name.



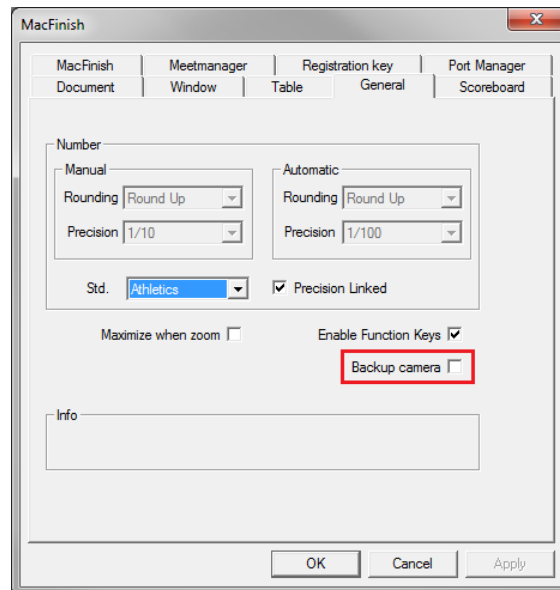
Select a serial port, when you lost the standard data cable

If you use the standard data cable, you don't have to configure the port to use. However, when you don't use that cable, you can select the serial port to use in MacFinish' PortManager.



Register as main or backup photofinish

You have an extra option in MacFinish to register your instance as a main or a backup photofinish. This will be used later on to control the Ready-LED status at the Starters Unit side.





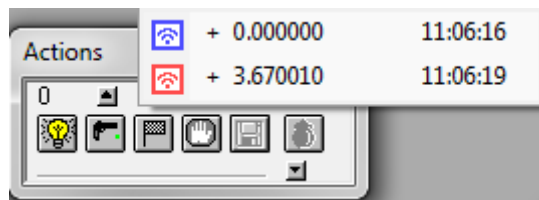
Start detection (dis)connected

You will receive the warning There is no start detection connected! When:

- there truly is no start detection connected (neither cabled, neither at the Starters Unit)
- MacFinish Unit and Starters Unit are not in-sync or instable communication is detected

Start signals

Start signals are indicated with a wireless symbol ( ).



Normal, wired start signals keep on being detected.

2. Wireless Start in MacFinish 2D 400

Wireless Start is compatible with version 7.7.4.4 of the MacFinish 2D 400 software or later. You can find our software on our website: www.timetronics.be/software.html.

2.1 Connection



Connect the power cable from the MacFinish Unit to the second start input in the MacFinish interface box (back side).

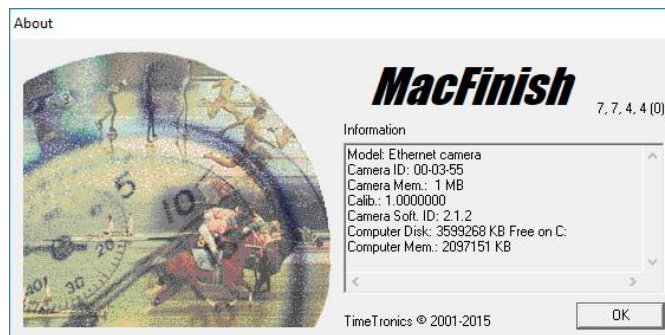


Connect the USB cable from the MacFinish Unit to the back panel of the MacFinish2D 400 camera (same for a MacFinish2D 410). This connection can even be made or broken during runtime. The MacFinish camera will start, stop or restart the communication with the MacFinish Unit.

2.2 MacFinish software

The firmware

Your MacFinish2D 400 (or 410) camera needs at least firmware version 2.0.34.



If you need to update the camera's firmware, please contact TimeTronics (support@timetronics.be).

MacFinish software

You need at least MacFinish software version 7.7.4.4. You can find our software on our website: www.timetronics.be/software.html.

Note that these new versions are both backward and forward compatible: you can still use older MacFinish software versions with the new firmware version and you can still use the new MacFinish software version with older firmware version.

Status of MacFinish Unit

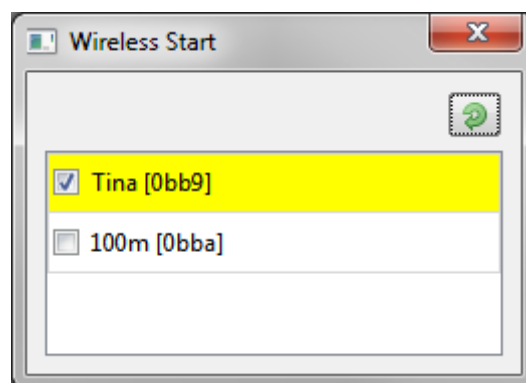
You notice two extra segments in the status bar indicating the status of the MacFinish Unit.



Depending on the color of the symbol, this is the status of the MacFinish Unit. If you have given the Starters Unit a name, the symbol will be replaced with the name (like *Bart* in the image).

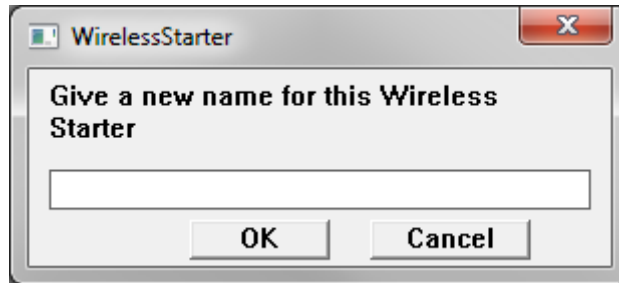
- ∇∇ (transparent) No Wireless Starter or no camera is connected
- ∇∇ (#ff0000) No connection from MacFinish Unit to any Starters Unit
- ∇∇ (#ff5500) Connection from MacFinish Unit to Starters Unit established, but they are not yet in-sync or the Starters Unit is not yet in sync with MacFinish
- ∇∇ (#ffaa00) MacFinish Unit and Starters Unit are connected and in-sync, but there has been no communication for some seconds.
- ∇∇ (#177245) MacFinish Unit and Starters Unit are connected and in-sync, no problems detected

Select another Starters Unit



Double click on the name of the Starters Unit in the status bar and a selection window will appear. The Starters Unit currently in use, will be checked. You can select another one with one click on the checkbox. Once you selected a Starters Unit, the name will be filled in (after a small delay to let the MacFinish Unit associate with the Starters Unit and ask for its properties).

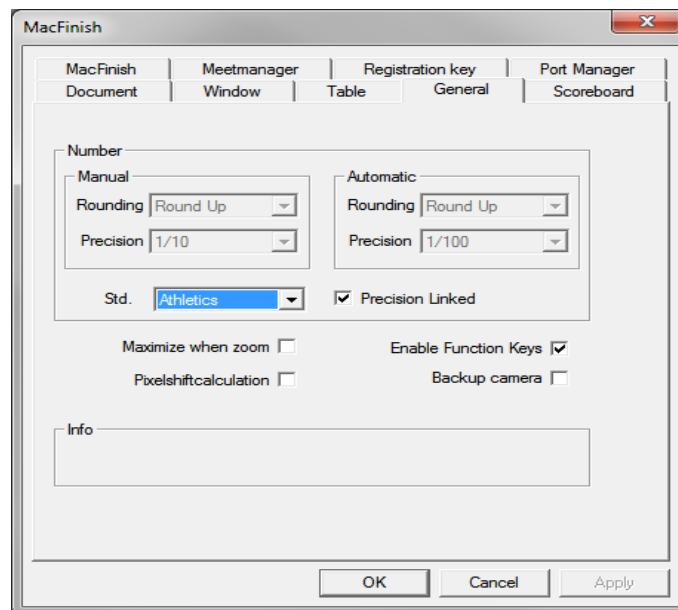
If the Starters Unit, you want to connect to, is not in the list, let the MacFinish Unit scan for all available Starters Units (button at right-top). The MacFinish unit scans at boot time, when connection lost (and an orphan scan offers no solace) and when asked to scan, it does not initiate a scan by itself.



Change the name of a Starters Unit

First open the selection window and double click on the Starters Unit in use (only on the one in use!). You will be prompted for a new name.

Register as main or backup photofinish



You find the checkbox to register as main or backup photofinish camera in MacFinish' File→Preferences...-menu (tab General). This setting is persisted in the installation of MacFinish 7-software (not in the MacFinish Unit). Each time you start MacFinish 7-software, the setting from that installation of MacFinish is written in the connected MacFinish Unit (if one is connected).

© Copyright 2019 TimeTronics. All rights reserved.

TimeTronics BVBA
Lammerdries-Oost 23b
B-2250 Olen
Belgium

Tel.: +32 (0) 14 23 19 11