

Manual Argus Photo Finish Quick Start Guide



Oct 2020

SPORT TIMING SYSTEMS



TimeTronics bv
Lammerdries-Oost 23B
B-2250 Olen, Belgium

www.timetronics.be - info@timetronics.be



Table of contents

PREFACE.....3

1. Software Launching and Initial Set Up 4

 1.1 Ethernet Settings 4

 1.2 License Key 4

2. Main Window Overview 6

 2.1 About & Language 6

 2.2 All My Races 7

 2.3 Camera Control..... 7

 2.3.1 Live Camera Preview 8

 2.3.2 Continuous Camera Recording 8

 2.3.3 Camera Control 9

 2.4 Results Table 9

 2.5 Photo Finish Picture 10

 2.6 Link With Others 10

 2.7 Preferences 10



Welcome to the Argus Quick Start user manual.

This guide is intended for those users that have had prior experience with TimeTronics photo finish products and wish to have a quick overview of how the new Argus Photo Finish cameras operate. This guide assumes that the user has the software installed correctly and all hardware connected. For those users that require more detail into the overall functionalities of the Argus Photo Finish cameras (with set up information and troubleshooting), please see our full 'Argus Photo Finish Manual'.

Please note that all pictures are examples, the delivered version can be different than shown in this manual please inform yourself before purchase.

If you, after reading this document, have any further question regarding the operation or service of this or any other TimeTronics equipment, please contact your local distributor or TimeTronics directly, by email: info@timetronics.be, or call us at +32 (0) 14 23 19 11.

Please also contact us if you have any remarks or advice regarding this user manual: info@timetronics.be

Good luck and thank you for your confidence in the TimeTronics products and services.

The editors

© Copyright 2020 TimeTronics. All rights reserved.

TimeTronics bv
Lammerdries-Oost 23b
B-2250 Olen
Belgium

Tel.: +32 (0) 14 23 19 11

Disclaimer

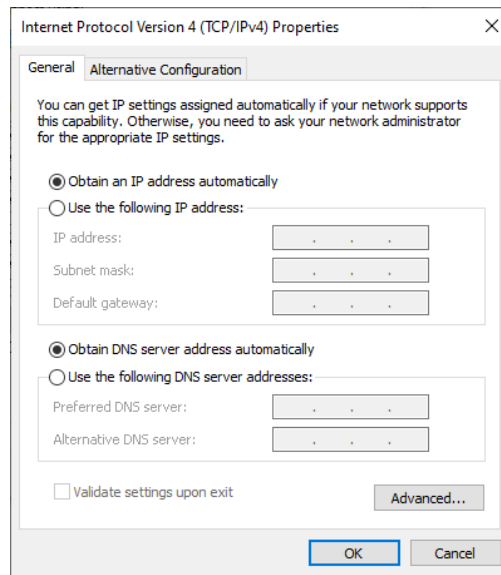
Under no circumstances shall TimeTronics be liable for any loss, damage or expense suffered or incurred with respect to any defective product. In no event shall TimeTronics be liable for any incidental or consequential damages that you may suffer directly or indirectly from use of any product.

1. Software Launching and Initial Set Up

When Launching the Argus software for the first time, there are some key points that need to be completed first before you can begin to use the Argus photo finish camera.

1.1 Ethernet Settings

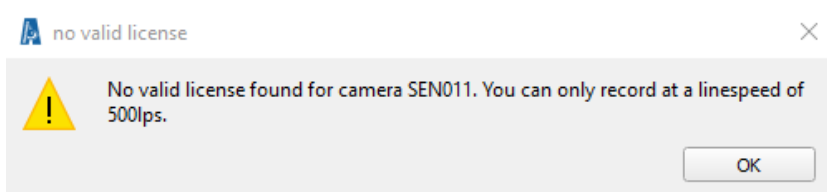
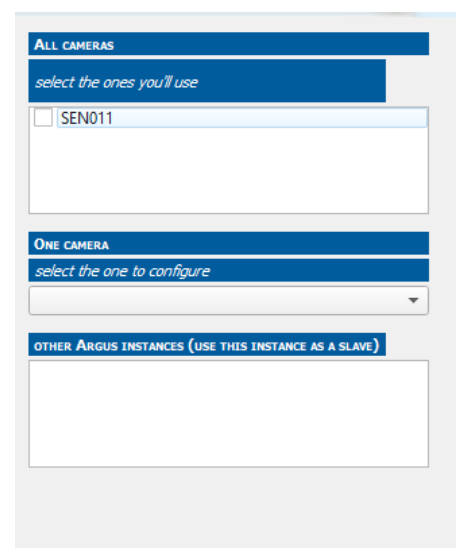
Please make sure your Ethernet connection settings are set to 'Obtain an IP address automatically'. This option can be found in the 'Change adapter settings' of your 'Network and Sharing Centre'.



1.2 License Key

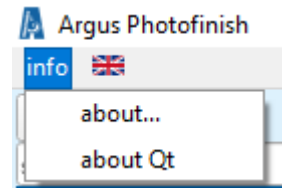
When launching the software for the first time, you will be presented with the camera connection window. This is where you will see your new Argus camera ready for connection.

When you press the check box next to the camera to connect to it, a 'no valid license' window prompt will appear. We now need to install the license key of the camera to enable its functionalities which you have purchased.



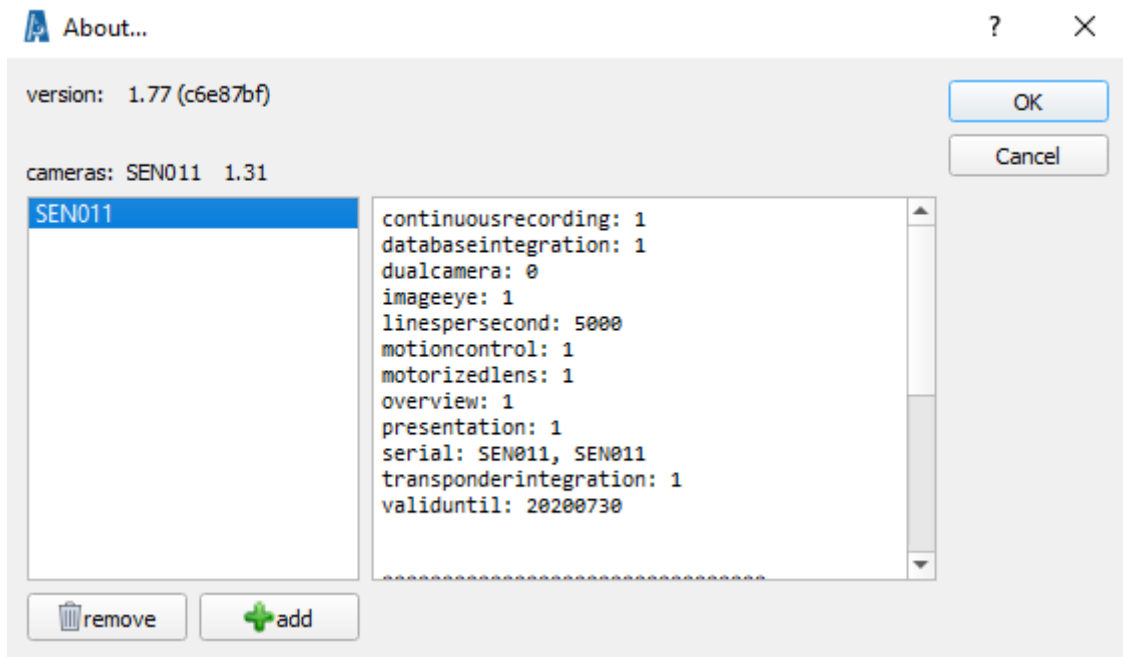
First you will need to locate the licence key for your camera. This can be found on the USB drive inside the carry case of your Argus photo finish camera delivery. The file you require will be Argus xx-xx-xx.lic (where xx-xx-xx is replaced by the serial number of your camera).

To load the licence key into the Argus software, you need to go to the 'i' icon on the top left of the software window and press 'about'



In the 'About' window, press the '+add' icon and locate your .lic file to load into the software.

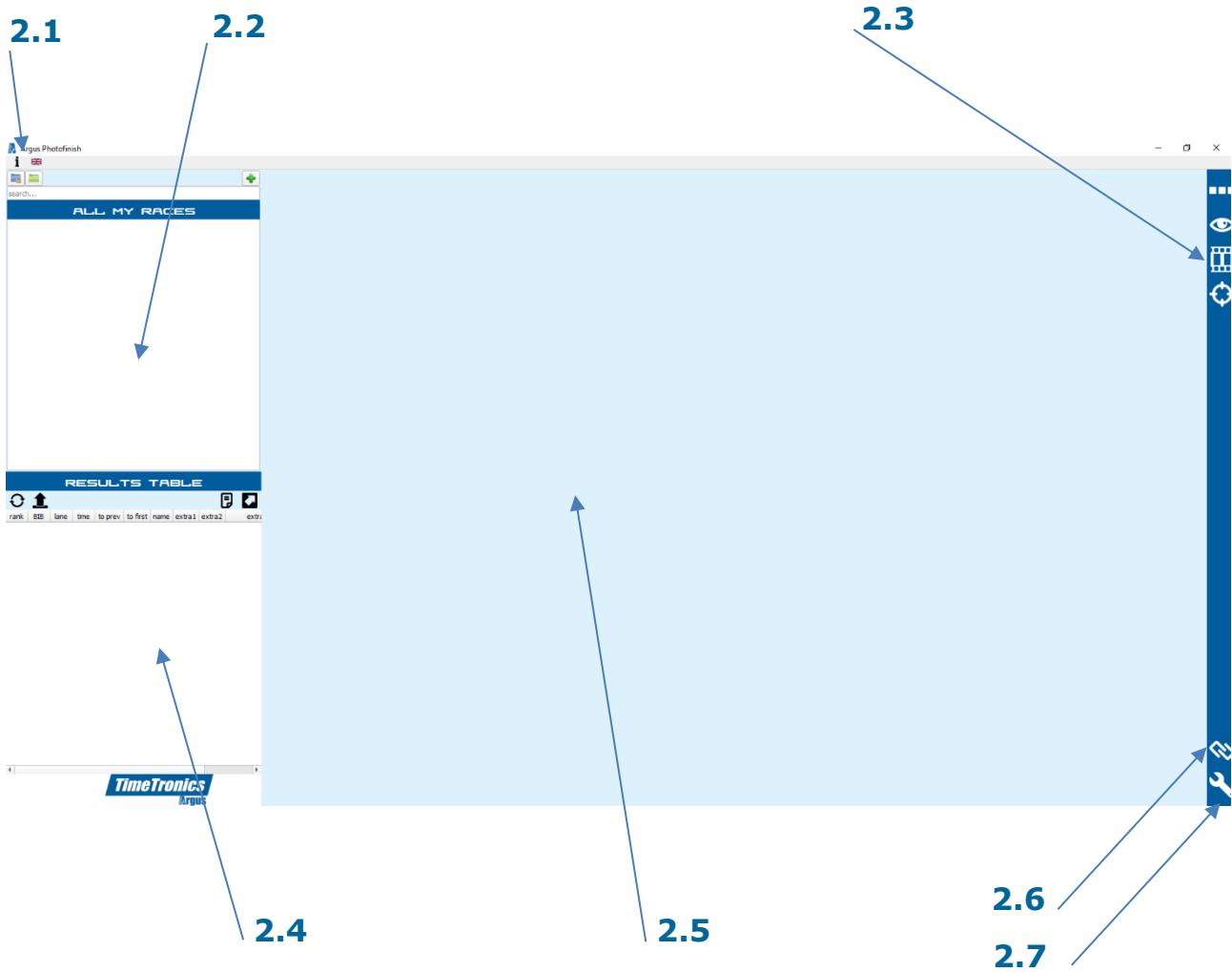
When this has loaded correctly, you will see the serial number of your photo finish camera in the 'About' window and you will see (when you click on the camera number) the camera functionality information to the right.



You can now close this window and we can begin to use your new Argus photo finish camera!

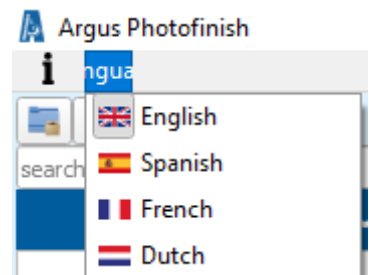
2. Main Window Overview

Now you have installed your licence key, you are ready to use your Argus photo finish camera for the first time. Here is a quick overview into the main window you will see during your time operating the Argus camera.



2.1 About & Language

As discussed earlier, here is where you can see information about the software (version number and licence key information) as well as change the language that you wish to operate the software in.



2.2 All My Races

Here is where will be listed all the races that you have created for competition. These can either be created manually using the Argus software, or imported via AthleticsManager data base/Excel import.

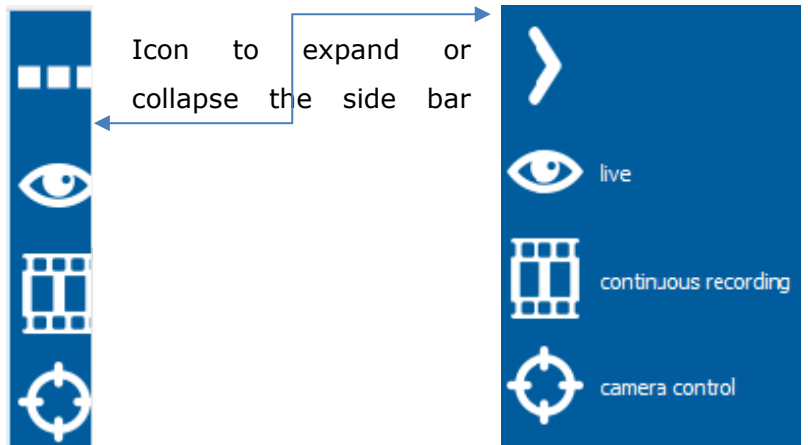


ALL MY RACES	
LEE VALLEY TEST	
60m SM Final	18:13
60m U20W Final	18:05
60m U20M Final	18:00
60m SW Final	17:55
60m SM Semi 4	17:46
60m SM Semi 3	17:43
60m SM Semi 2	17:37
60m SM Semi 1	17:34
60m U20W Semi 2	17:27
60m U20W Semi 1	17:24
60m U20m Semi 3	17:15
60m U20m Semi 2	17:12
60m U20M Semi 1	17:09
60m SW Semi 2	16:57
60m SW Semi 1	16:53
60m SM Heat 9	16:34
60m SM Heat 8	16:31

NOTE: For previous users of TimeTronics MacFinish cameras, in the past you would normally link a photo finish recording of a race to the database race information after the race has been completed. However, as the Argus camera is a LIVE RECORDING camera, you must first create a race that you will then save the live recording to.

2.3 Camera Control

This is the section of the software where you set up and align the camera before a competition and monitor it during a competition.

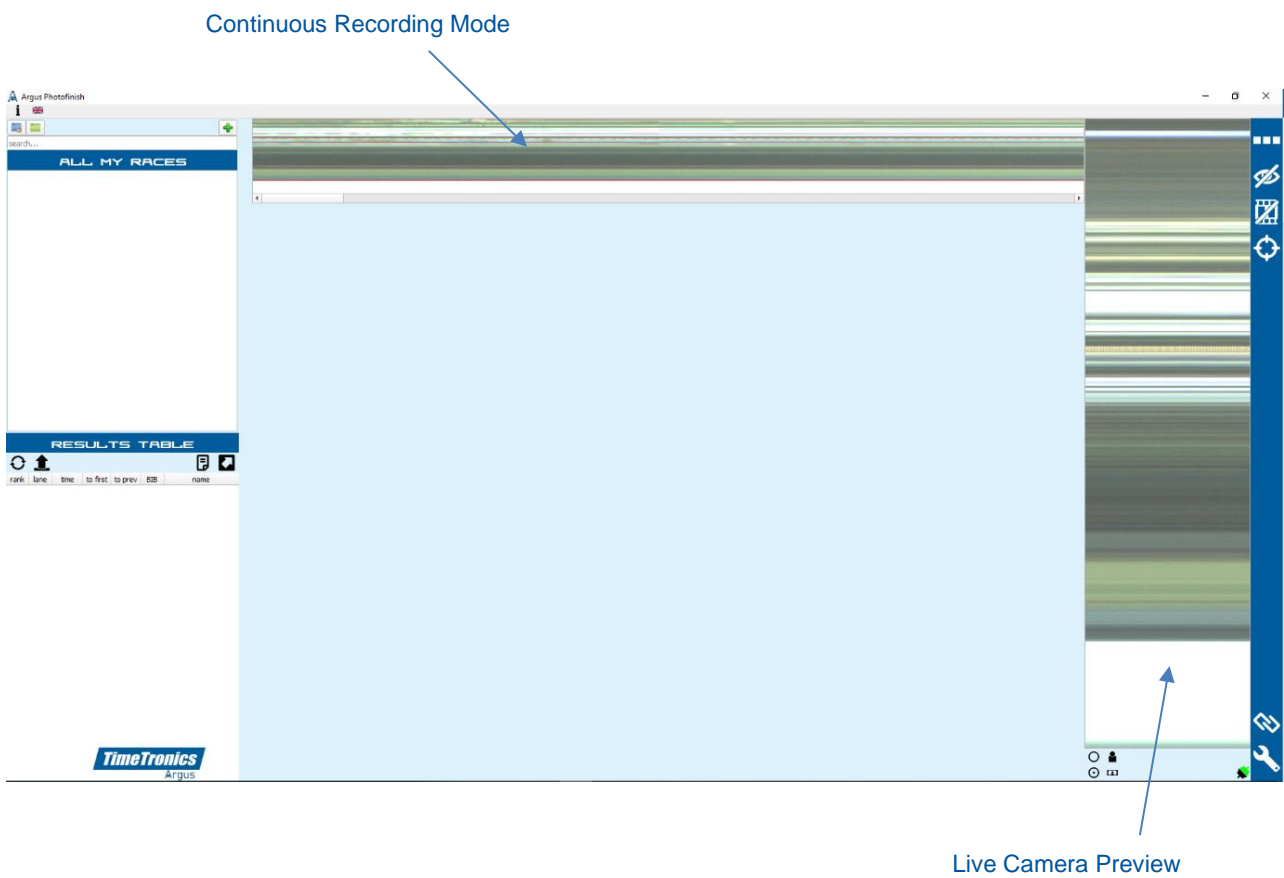


2.3.1 Live Camera Preview

Here is where you can see the live camera preview. For previous users of TimeTronics Macfinish software, this is similar to the Window→ Preview function. You will use this view before the competition to make final checks as to the alignment of your camera and lens zoom/focus. During the competition you can use this function to check on the quality of the photo finish picture and adjust if necessary, in relation to any changing lighting conditions.

2.3.2 Continuous Camera Recording

For those that have purchased the Argus Pro camera, you will have the option of a Continuous Recording mode. This is whereby the Argus photo finish camera is continuously recording all footage of the finish line for the past 20 minutes. Therefore, if you have an incident where you lose Ethernet connection to the camera, have an athlete run under the photocells or forget to set the photo finish system ready to accept an arrival, you can go back and import finish line footage from up to 20 minutes ago into the race file you desire. When selecting the Continuous recording mode, you will see the recording at the top of the software window.



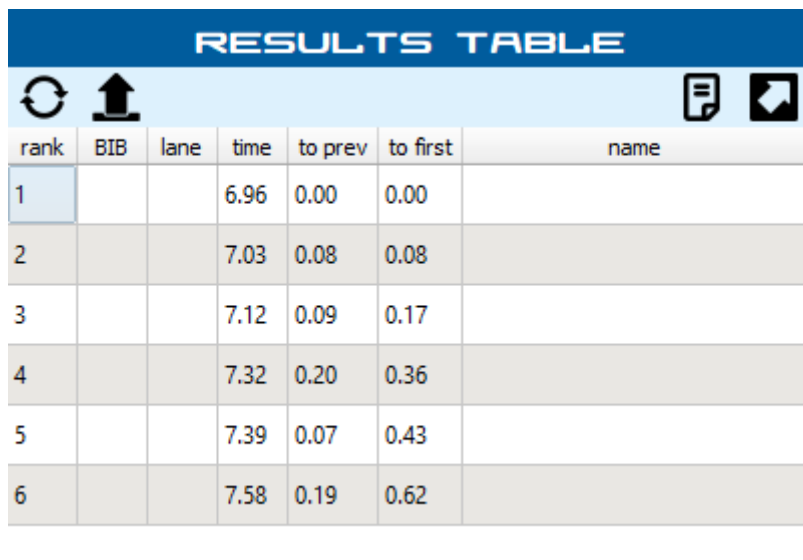
2.3.3 Camera Control

When you select this icon, the camera control window will be opened, and this is where you will set all the options for your camera (frame rate/motion control/alignment/colour balance settings). For previous users of TimeTronics Macfinish software, this is similar to the Window→ Camera Control function.

NOTE: When you launch the software and connect to a camera without a licence key, you will be presented with the no licence key window. However, when you launch the software and connect to the camera with the licence key installed, the Camera Control function will automatically open.

2.4 Results Table

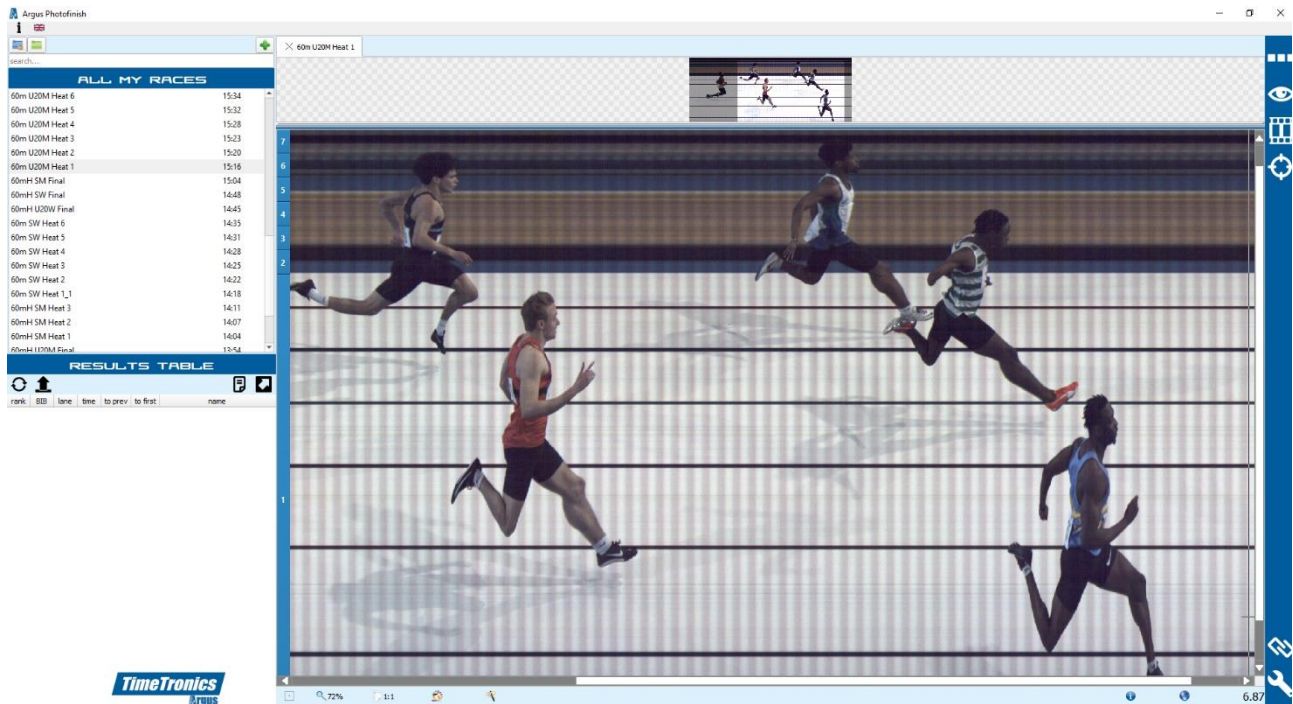
The Results Table section of the software is where you will see all the data in relation to the results of your photo finish picture.



RESULTS TABLE						
rank	BIB	lane	time	to prev	to first	name
1			6.96	0.00	0.00	
2			7.03	0.08	0.08	
3			7.12	0.09	0.17	
4			7.32	0.20	0.36	
5			7.39	0.07	0.43	
6			7.58	0.19	0.62	

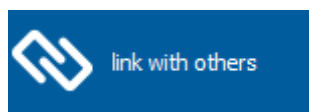
2.5 Photo Finish Picture

When you have a recording, the image of the athletes will appear live in this section of the software window. You will also notice that above the photo finish picture, you will see the overview of the photo finish image (if functionality has been purchased).



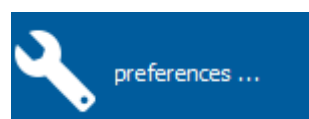
2.6 Link With Others

Here you can link the Argus photo finish software with additional external hardware, for example transponder timing system, scoreboards, or wind gauges.



2.7 Preferences

In the Preferences section of the software, you can configure all of the main settings required for the operation of your Argus photo finish camera; for example, sport type, lines before/lines after and software updates.



© Copyright 2020 TimeTronics. All rights reserved.

TimeTronics bv
Lammerdries-Oost 23b
B-2250 Olen
Belgium

Tel.: +32 (0) 14 23 19 11